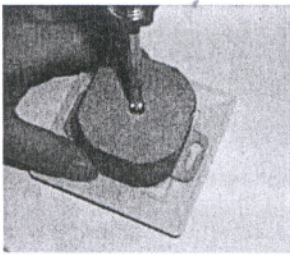
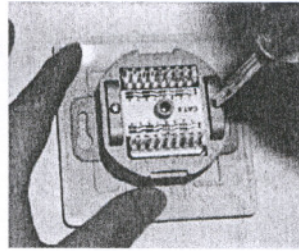


1

A.

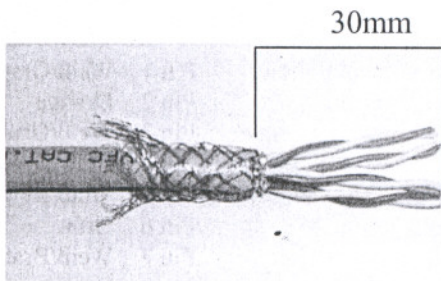


B.



Take away the bottom cover and loosen up the two screws inside.

2



Strip approximately 30mm of the cable jacket, and separate to 4 pair each.

3

T568A

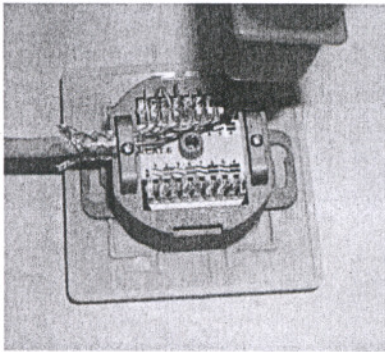
Pin 1 White/Green
 Pin 2 Green
 Pin 3 White/Orange
 Pin 4 Blue
 Pin 5 White/Blue
 Pin 6 Orange
 Pin 7 White/Brown
 Pin 8 Brown

T568B

Pin 1 White/Orange
 Pin 2 Orange
 Pin 3 White/Green
 Pin 4 Blue
 Pin 5 White/Blue
 Pin 6 Green
 Pin 7 White/Brown
 Pin 8 Brown

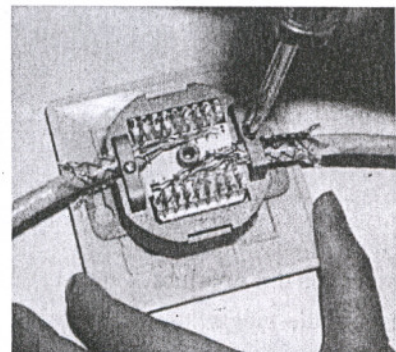
Follow the KRONE IDC color-coding to position T568A or T568B wiring.

4



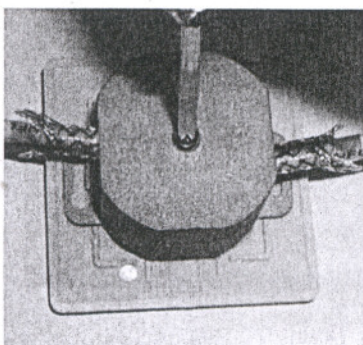
Use the 110D & KRONE impact tool to punch and connect the wires.

5



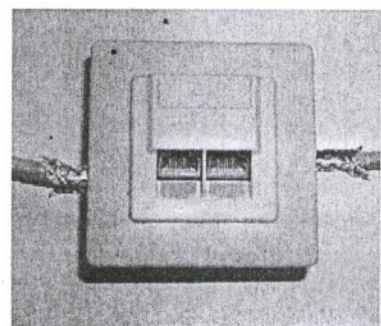
Fasten the screws to secure both the braid and the cable jacket.

6



then to assemble the bottom cover and screw.

7



Then complete the installation.